

Hematology

Digital Morphology of Blood cells



Clinical Application Module

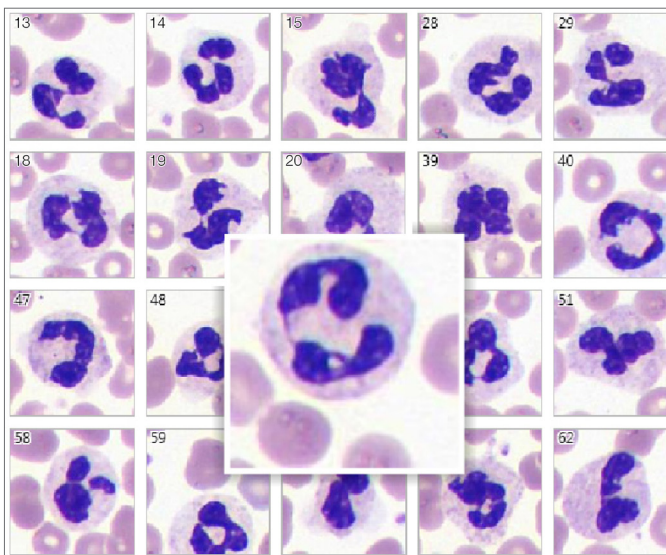
Vision Hema

The screenshot displays the Vision Hema software interface. At the top, there is a toolbar with icons for Folder, Patient, Sample, Scanner, Blood Analyzer, Report, Barcode, Panels, Samples Filter, Refresh, and Completed. Below the toolbar is the 'Main' window, which is divided into several sections:

- Samples:** A table listing sample IDs, status, and change dates.
- Results:** A table showing cell type counts and percentages.
- Cells:** A grid of microscopic images of blood cells, with a larger, detailed view of a cell in the center.

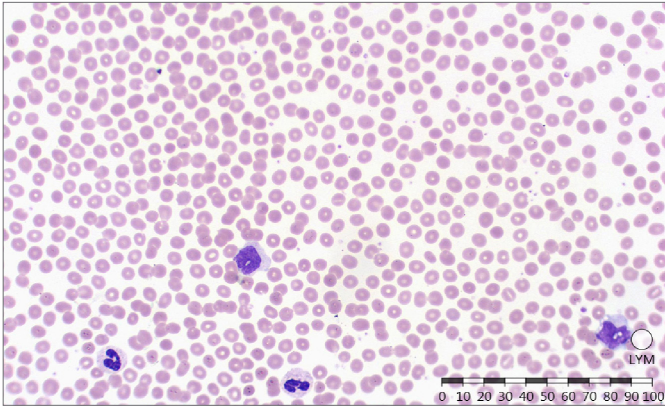
ID	Status	Sam	Last Change Date
5062	Scanned	CBC	24.09.2019 16:48
5061	Scanned	CBC	24.09.2019 16:47
5060	Scanned	CBC	24.09.2019 16:47
5059	Scanned	CBC	24.09.2019 16:45
5058	Scanned	CBC	24.09.2019 16:44
5057	Scanned	CBC	24.09.2019 16:43
5056	Scanned	CBC	24.09.2019 16:43
5055	Scanned	CBC	24.09.2019 16:44
5054	Scanned	CBC	24.09.2019 16:42
5053	Scanned	CBC	24.09.2019 16:41
5052	Scanned	CBC	24.09.2019 16:40
5051	Scanned	CBC	24.09.2019 16:43
5050	Scanned	CBC	24.09.2019 16:39
5049	Scanned	CBC	24.09.2019 16:38
5048	Scanned	CBC	24.09.2019 16:37
5047	Scanned	CBC	24.09.2019 16:45
5046	Scanned	CBC	24.09.2019 16:36
5045	Scanned	CBC	24.09.2019 16:35
5044	Scanned	CBC	24.09.2019 16:34
5043	Scanned	CBC	24.09.2019 16:34
5042	Scanned	CBC	24.09.2019 16:35
5041	Scanned	CBC	24.09.2019 16:33
5040	Scanned	CBC	24.09.2019 16:32
5039	Scanned	CBC	24.09.2019 16:31
5038	Scanned	CBC	24.09.2019 16:32
5037	Scanned	CBC	24.09.2019 16:30
5036	Scanned	CBC	24.09.2019 16:29

Cell Type	Count	%
Leukocytes	98	100
Basophils	-	-
Eosinophils	-	-
Promyelocytes	-	-
Myelocytes	-	-
Metamyelocytes	-	-
Band neutrophils	-	-
Segmented neutrophils	83	84,7
Lymphocytes	9	9,2
Monocytes	6	6,1
Plasma cells	-	-
Reactive lymphocytes	-	-
Large granular lymphocytes	-	-
Prolymphocytes	-	-
Atypical lymphocytes	-	-
Blasts	-	-
Sezary cells	-	-
Hairy cells	-	-
Unknown	-	-
Non-WBC	-	-
Artefacts	3	3,1
Smudge cells	4	4,1
Erythroblasts (NRBC)	-	-
Giant platelets	-	-
Platelets aggregations	-	-
Megakaryocytes	-	-



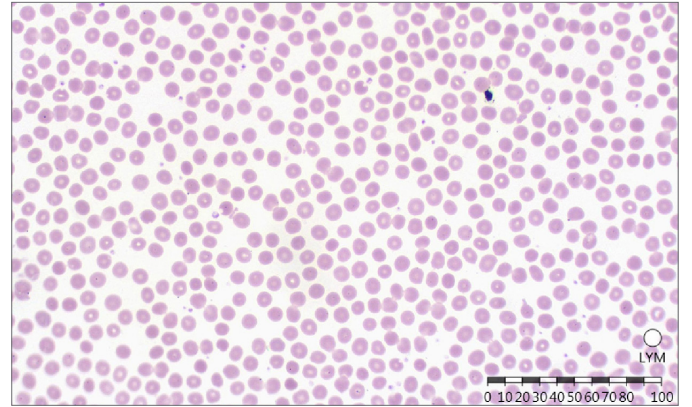
Identification and pre-classification of leucocytes

- Basophils
- Eosinophils
- Promyelocytes
- Myelocytes
- Metamyelocytes
- Band neutrophils
- Segmented neutrophils
- Lymphocytes
- Monocytes
- Reactive lymphocytes
- Blasts
- Erythroblasts



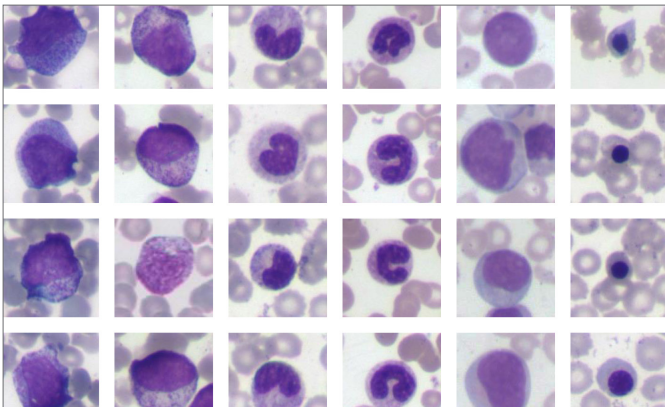
Analysis of erythrocytes

- Size
- Color
- Shape
- Inclusions



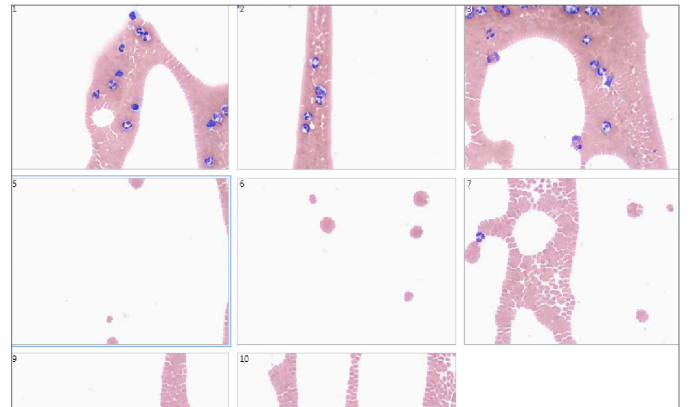
Analysis of platelets

- Normal
- Micro
- Macro



Analysis of pathological and complex cells

- Cells with degenerative changes
- Immature forms of neutrophils
- Atypical forms of lymphocytes
- Blasts
- Erythroblasts, smudge cells and other non-WBC cells

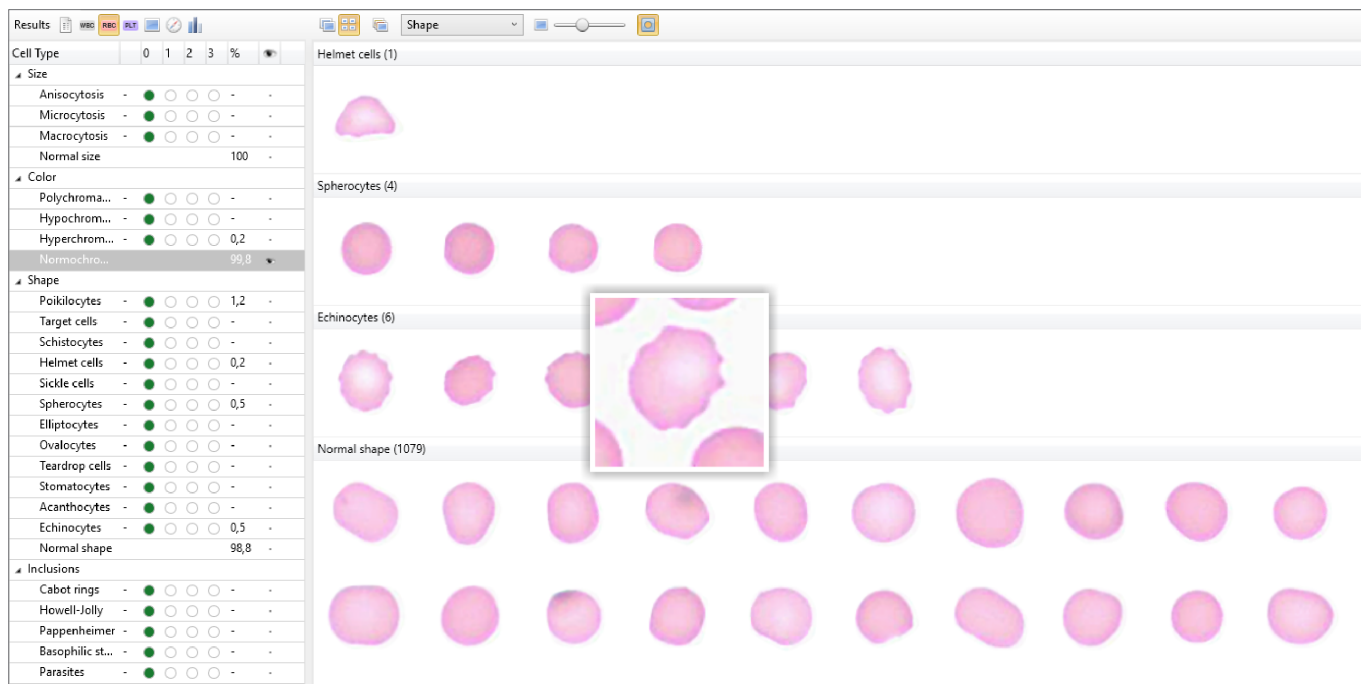


Scanning of blood smear tail

- Additional assessment of atypical forms of leukocytes
- Assessment of platelet aggregations

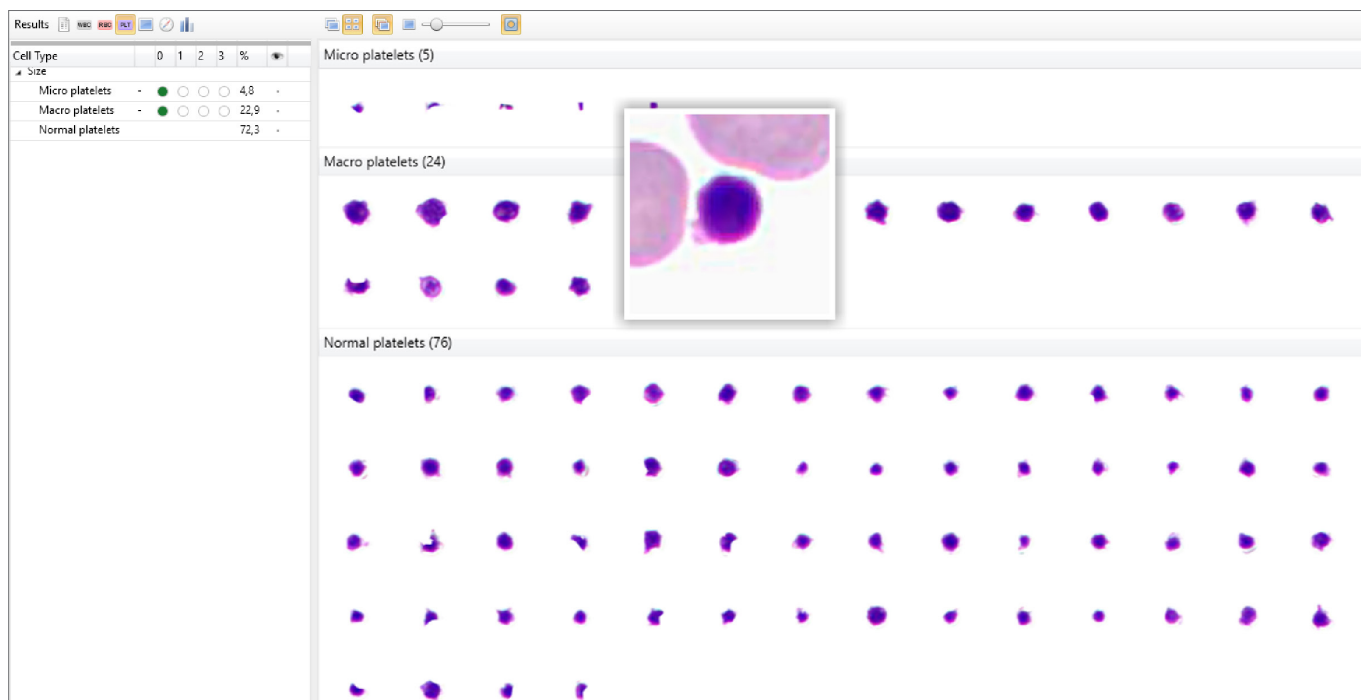
Additional modules

Vision Extended RBC



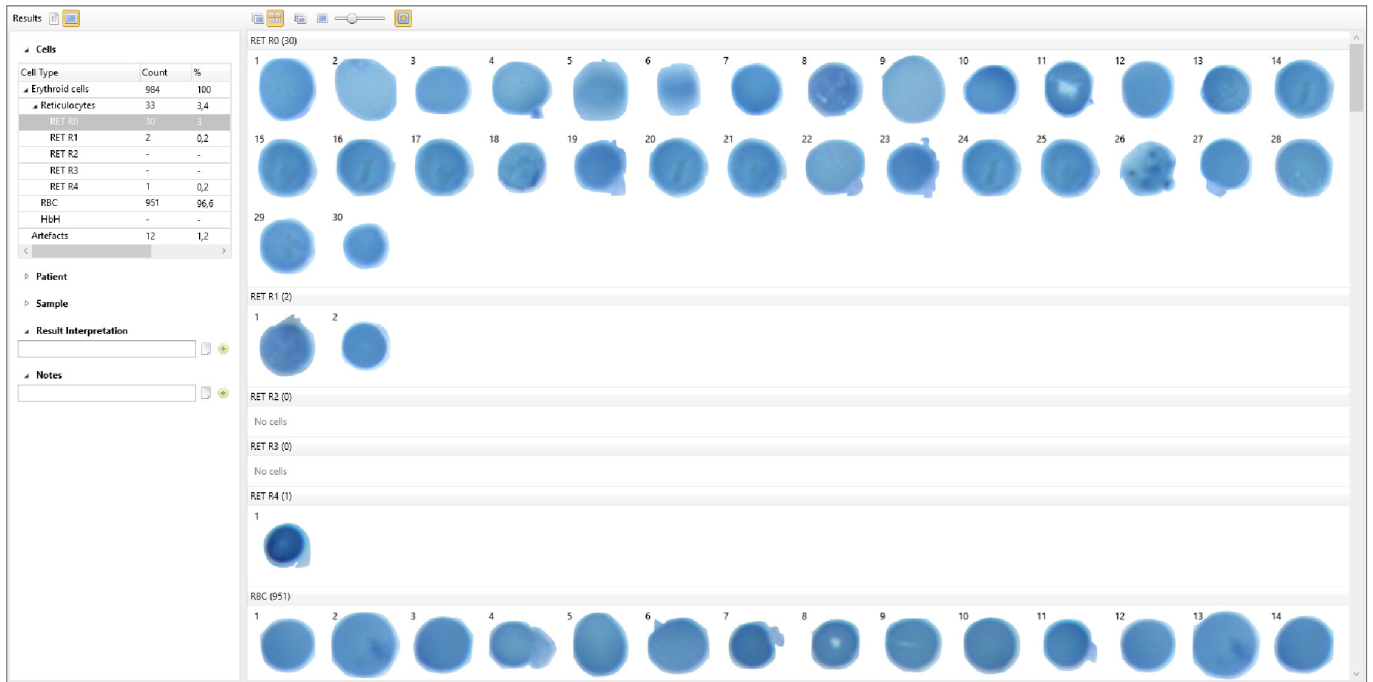
Automatic identification of erythrocytes by size, color, forms and inclusions. Pre-classification of erythrocytes by 21 parameters. Detailed information of every erythrocyte.

Vision Extended PLT



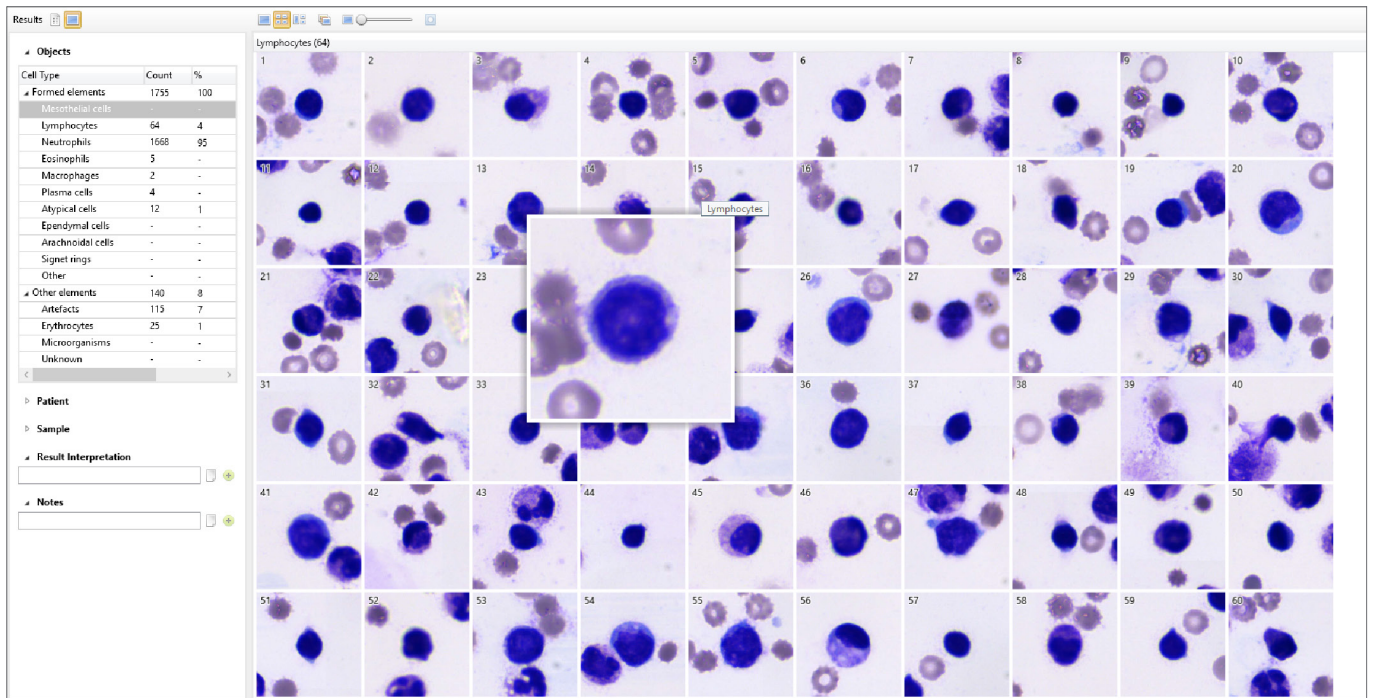
Automatic identification and pre-classification of platelets by 3 parameters: micro, macro, normal. Detailed information of every platelet.

Vision RET



Automatic identification and pre-classification of reticulocytes by classes.

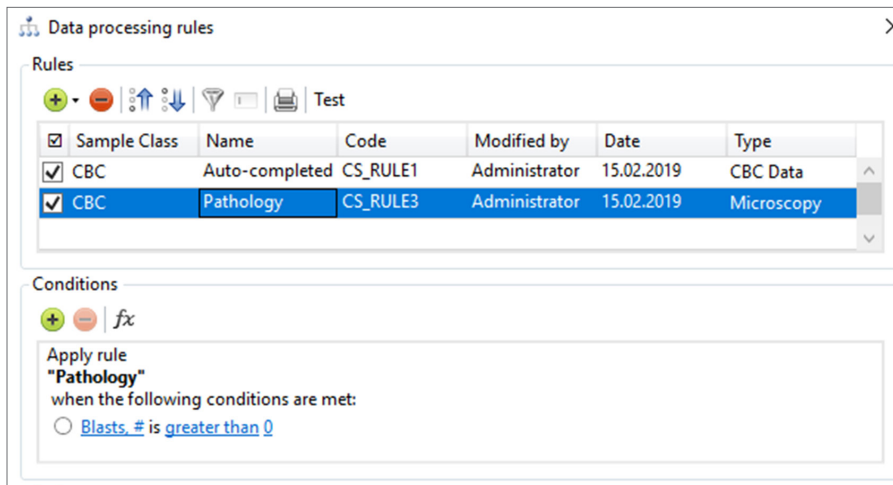
Vision Body Fluids



Automatic identification and pre-classification of cells in human body fluids.

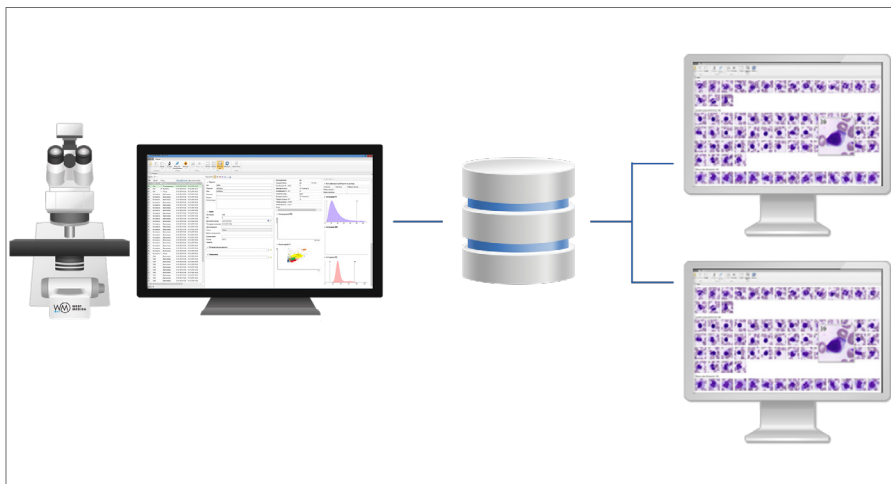
Administrative Modules

Vision Manager



Analysis procedure automation, data processing rules created by the specialist.

Vision Remote



Remote workstation.

Artificial intelligence



Artificial intelligence (AI) cumulates algorithms and technologies that allow computers to learn and solve intellectual tasks provided by humans.

AI speeds up processing and interpretation of data, and allows to efficiently perform the most comprehensive tasks, including medical image analysis.

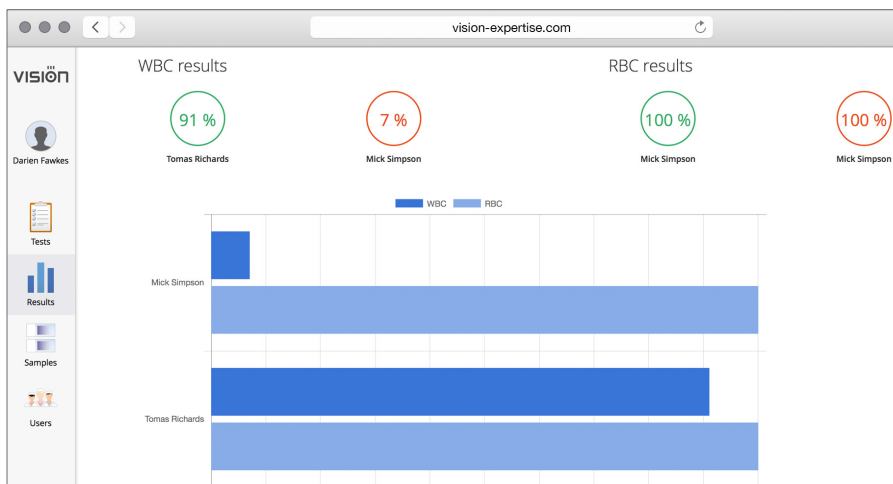
Consulting and Education Modules Vision Suite

The screenshot shows a web browser window with the URL vision-suite.com. The page displays a table of test results with columns for 'Предпросмотр' (Preview), 'LIB', 'Дата взятия пробы' (Date of sample collection), 'УИИ' (UOI), 'Проба' (Sample), 'Размер' (Size), and 'Комментарий' (Comment). The table contains 8 rows of data, each with a small circular image of a sample and a QR code.

Предпросмотр	LIB	Дата взятия пробы	УИИ	Проба	Размер	Комментарий
		12/05/2018, 5:49 PM	2850	Пан	1.1 GB	
		12/05/2018, 5:46 PM	2849	Пан	437.4 MB	
		12/05/2018, 5:44 PM	2848	Пан	363.3 MB	
		12/05/2018, 5:39 PM	2847	Пан	403.3 MB	
		12/05/2018, 7:33 PM	4914	DS	1.9 GB	
		12/05/2018, 7:33 PM	4558	Histo	905.7 MB	
		12/05/2018, 7:32 PM	4557	Histo	1.5 GB	

Cloud/server for telemedicine and remote consultations with colleagues.

Vision Expertise



Online testing and quality control.

Clinical applications

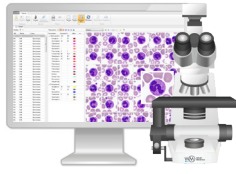


The latest developments of artificial intelligence provide a solution for the tasks connected with automation in digital microscopy.

Our technologies speed up the diagnostic process, reduce analysis time and lower subjectivity of the results received.

They improve the efficiency of laboratory routine operation, bringing microscopy analyses in line with state-of-the-art standards.

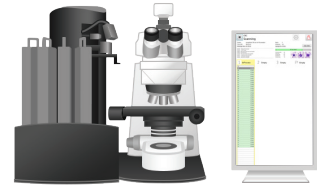
Specifications



Vision Assist
Cell Imaging Analyzer



Vision Pro
Cell Imaging Analyzer



Vision Ultimate
Cell Imaging Analyzer

Application module: Vision Hema	Application module: Vision Hema	Application module: Vision Hema
Additional modules: Vision Extended RBC Vision Extended PLT Vision RET Vision Body Fluids	Additional modules: Vision Extended RBC Vision Extended PLT Vision RET Vision Body Fluids	Additional modules: Vision Extended RBC Vision Extended PLT Vision RET Vision Body Fluids
Working modes: queue (only 4 slides version)	Working modes: queue, random access	Working modes: queue, continuous and random access, STAT testing, 24/7
Automatic scanning 1 or 4 slides	Automatic scanning 8 slides	Automatic scanning Up to 200 slides
Manual slide handling	2 cassettes with slides	Automatic slide handling
Microscope for scanning	Microscope for scanning	Microscope for scanning
Personal computer	Personal computer	Personal computer
Monitor —	Monitor —	Monitor Touch-screen monitor for control
—	Built-in barcode reader (optional)	Built-in barcode reader
—	Automatic oil dispenser (optional)	Automatic oil dispenser
Optical system: 10x, 50x Oil, 100x Oil	Optical system: 10x, 60x Oil, 100x Oil	Optical system: 10x, 50x Oil, 100x Oil
Bright field	Bright field	Bright field
Köhler illumination, LED	Köhler illumination, LED	Köhler illumination, LED
Bidirectional LIS, LIS2-A2 (ASTM), HL7, Ethernet	Bidirectional LIS, LIS2-A2 (ASTM), HL7, Ethernet	Bidirectional LIS, LIS2-A2 (ASTM), HL7, Ethernet
Art. N.: 71150.01(1 slide) Art. N.: 71450.01 (4 slides)	Art. N.: 72852.01 (8 slides)	Art. N.: 73011.01 (200 slides)

We reserve the right to change specification without notice.



West Medica Produktions- und Handels-GmbH
Brown-Boveri-Straße 6, B17-1
2351 Wiener Neudorf, Austria
tel.: +43 (0) 2236 892465, fax: +43 (0) 2236 892464
vienna@westmedica.com, www.wm-vision.com

Official Distributor